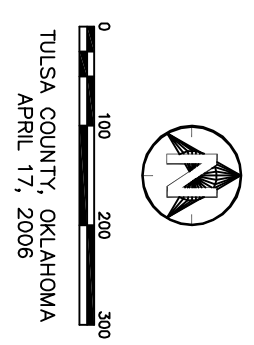
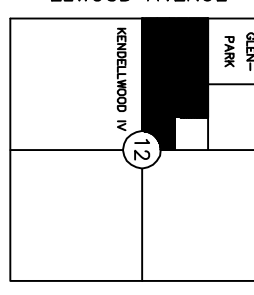


R 12 E
E. 131st ST. SOUTH



PECAN ESTATES

FINAL PLAT
OF
SECTION 12, TOWNSHIP 17 NORTH, RANGE 12 EAST OF THE INDIAN BASE AND MERIDIAN, TULSA COUNTY, STATE OF OKLAHOMA.

SURVEYOR:
D. Goss & Associates, LLC
P.O. Box 216
Collinsville, Oklahoma 74021
Phone: (918) 371-0096

OWNER:
The 301 Club, LLC
13427 S. Elwood Ave.
Glenpool, Oklahoma 74033
Phone: (918) 291-1843

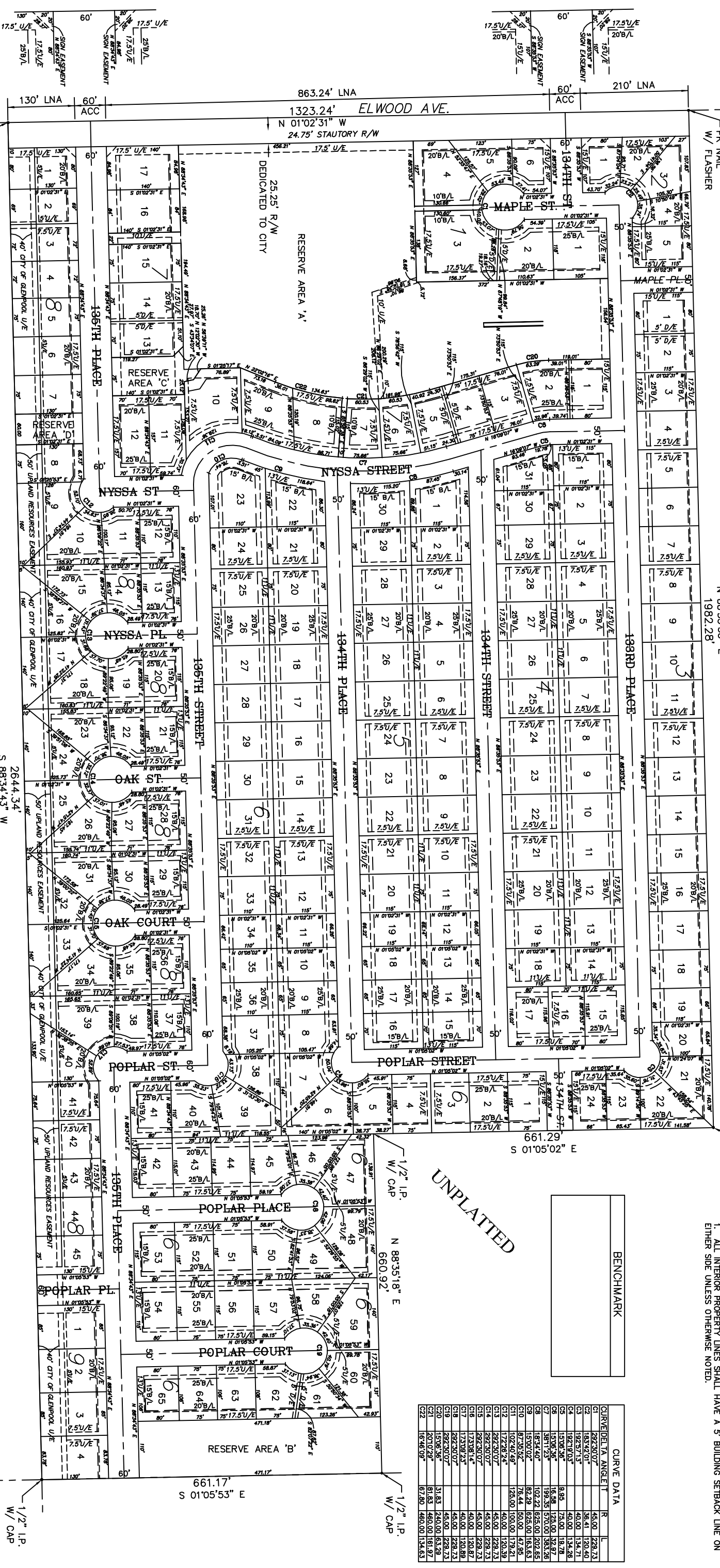
ENGINEER:
DeShazo, Tong & Associates, Inc.
Tulsa Centre Office Park
10850 East 45th, Suite 204
Tulsa, Oklahoma 74146
Phone: (918) 627-0046
C.A. No. 1297

E. 141st STREET S.
LOCATION MAP
SCALE: 1"=2000'

GLENPARK

N 88°35'53" E
1982.28'

UNPLATTED



LEGEND
 --- B/L = BUILDING LINE
 --- R/W = RIGHT OF WAY
 --- U/E = UTILITY EASEMENT
 --- LNA = LIMITS OF NO ACCESS
 --- ACC = LIMITS OF ACCESS

NOTES:
 1. ALL INTERIOR PROPERTY LINES SHALL HAVE A 5' BUILDING SETBACK LINE ON EITHER SIDE UNLESS OTHERWISE NOTED.

SUBDIVISION CONTAINS
 9-BLOCKS, 227-LOTS,
 1-RESERVE AREA 'A', 1-RESERVE AREA 'B',
 1-RESERVE AREA 'C', 1-RESERVE AREA 'D',
 BLOCK-1 CONTAINS 1,728 ACRES
 BLOCK-2 CONTAINS 0,886 ACRES
 BLOCK-3 CONTAINS 4,685 ACRES
 BLOCK-4 CONTAINS 6,152 ACRES
 BLOCK-5 CONTAINS 5,859 ACRES
 BLOCK-6 CONTAINS 14,390 ACRES
 BLOCK-7 CONTAINS 9,779 ACRES
 BLOCK-8 CONTAINS 10,218 ACRES
 BLOCK-9 CONTAINS 1,011 ACRES
 RESERVE AREA 'A' CONTAINS 6,564 ACRES
 RESERVE AREA 'B' CONTAINS 1,190 ACRES
 RESERVE AREA 'C' CONTAINS 0,242 ACRES
 RESERVE AREA 'D' CONTAINS 0,179 ACRES

BENCHMARK

CURVE DATA

CURVE DELTA ANGLE (T)	R	L
292°30'07"	45.00	228.73
183°42'01"	38.41	120.40
192°57'13"	40.00	134.71
182°18'03"	40.00	134.28
150°06'36"	8.85	75.00
150°06'36"	16.98	128.00
183°44'07"	198.35	570.00
150°07'02"	92.29	925.00
87°35'52"	76.44	80.00
102°40'48"	125.00	179.21
172°28'24"	40.00	120.39
292°30'07"	45.00	228.73
292°30'07"	45.00	228.73
173°08'14"	40.00	120.87
292°30'07"	45.00	228.89
150°06'36"	45.00	228.73
201°07'29"	81.83	240.00
16°46'09"	67.80	460.00

KENDALWOOD IV

PLAT NO. PAGE

This document was created with Win2PDF available at <http://www.win2pdf.com>.
The unregistered version of Win2PDF is for evaluation or non-commercial use only.
This page will not be added after purchasing Win2PDF.